



saving water





The need to save water is increasing dramatically worldwide. All sectors are looking for reliable and affordable tank systems for the storage of, among other things, drinking water, waste water, irrigation water, manure, seawater and sludge. Our modularly built corrugated steel tanks offer the solution.

BUCON has implemented ground-breaking innovations on a well-known concept and can offer the best and cheapest solution.

THE IMPROVEMENTS ARE:

- Higher S 350 GD steel quality for more strength and tank heights of up to 6.10 meters
- Newly developed galvanising layer means 70% less zinc use and much higher corrosion resistance. It also prevents white rust
- The most modern machines of their kind deliver perfect uniformity and quality
- Environmentally-friendly color coating in light grey (RAL 7038) and dark green (RAL 6009)
- Patented bolt set provides 2x stronger connections and fewer bolt sets per tank
- An improved corrugated profile measuring 76 x 20 mm ensures, even with low steel thickness, greater dimensional sheet stability
- Available in easy to transport sheet lengths of 2300 mm and 3048 mm

BUCON: ironclad

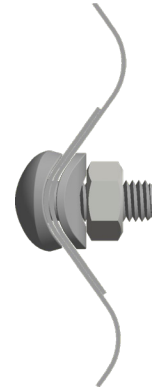
The strength of the tank construction is determined by the steel quality, corrugated profile and bolt sets.

IN THE BUCON DESIGN, THESE PARTS HAVE BEEN IMPROVED:

- S350 GD steel quality, which is stronger than usual
- The corrugated profile is increased from 18 to 20 mm, which makes our tanks considerably firmer and more rigid
- The patented bolt set can handle a much greater tensile strength and provides twice as strong a connection

THE PATENTED BOLT SET DESIGN

The bolts and rings of BUCON tanks have the same shape as the corrugation of the steel sheets. This achieves a much larger contact surface with the sheets. As a result, the tensile strength that the connection is able to handle is twice as large as with normal bolts. The BUCON bolt sets also ensure faster assembly as they cannot continue running.



Unique galvanisation method

BUCON ZINC/MAGNESIUM/ALUMINUM GALVANIZATION

The S350 GD steel is galvanised on both sides to provide protection against rust. The steel's corrosion resistance is not only determined by the thickness of the coating, but also by the composition. Studies at various universities have clearly shown that 3% magnesium provides greatly improved corrosion protection compared to other products on the market. That is why the BUCON tanks have a unique Magnelis® galvanising layer that

includes 3% magnesium and 3.5% aluminum in addition to zinc. Magnelis® offers the best available protection against rust, even under the most challenging conditions.

The patented Magnelis® galvanising method for corrugated steel tanks is available exclusively from BUCON.



BUCON galvanisation after 34 weeks in a salt spray test



Conventional galvanisation after 6 weeks in a salt spray test

*Magnelis® is a registered trademark of ArcelorMittal Flat Carbon Europe S.A.

BUCON in colour

CHROMATE-FREE ORGANIC COLOUR COATING



The BUCON colour coating is organic and is applied immediately after galvanisation. This guarantees perfect adhesion of the coating and a very uniform layer thickness of 55 µm.

This high-quality coating ensures long-term protection in aggressive environments.

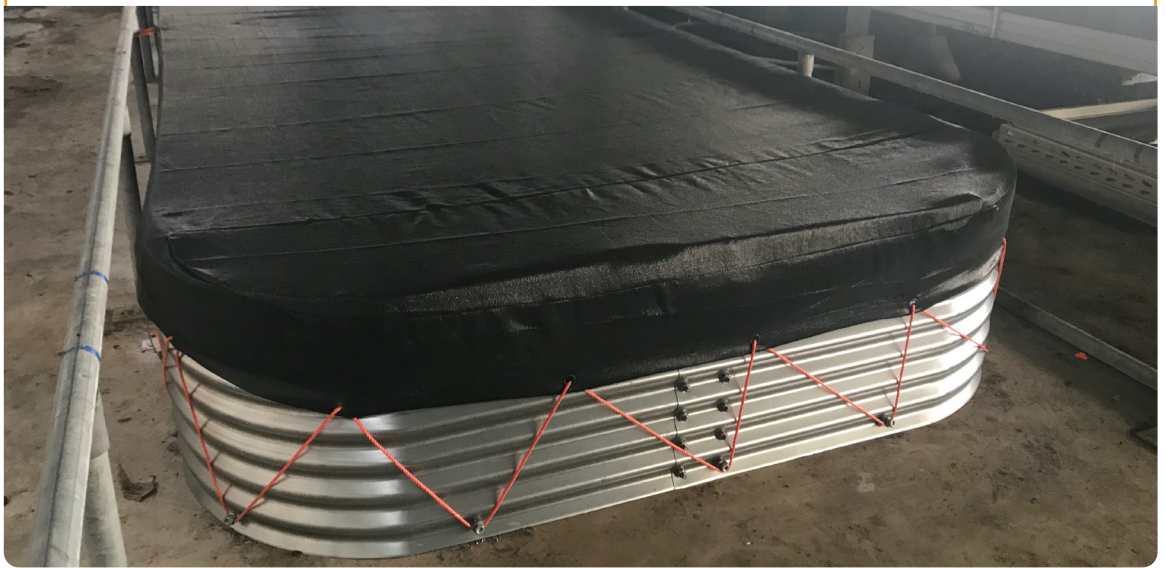
- Highest level of rust protection (RC5)
- Highest level of UV resistance (RUV4)
- High scratch resistance (40 N)
- Excellent forming characteristics (1.5T)
- Extremely reliable and durable
- Available as standard in light grey (RAL 7038) and dark green (RAL 6009)



BUCON square

SQUARE OR RECTANGULAR

The machines at BUCON are able to make very sharp corners/bends in corrugated sheets without damage. BUCON is therefore the only manufacturer able to make 'square' tanks. These are extremely suitable as a drip tray or buffer tank for ancillary water installations.



BUCON roof

CORRUGATED STEEL ROOFS

The BUCON patented corrugated steel roof is a very good and easy to install cover for new and existing silos with a diameter of up to 10 meters. The roof is sufficiently light-proof, draining and so sturdy that it can even be walked on. No extra reinforcements are required on the tank wall for the corrugated steel roof.



Tank liners

The metal tank construction is made liquid-tight with a prefabricated plastic liner.

All tank liners are made to measure for the tank. Different plastics can be used depending on the liquid. The most common used material is FPP (Flexible Polypropylene). Of course are other liners as PVC (Poly Vinyl Chloride) and EPDM (Ethylene Propylene Diene Monomer) available by BUCON.

The material thicknesses vary from 0.5 to 1.0 mm and are dependent on the liquid and application.



Tank wall and bottom outlet

The inlet and outlet pipes are preferably connected via the bottom. This is done by means of conical outlet placed in the bottom of the sail. If desired, pipes can also be fed through the tank wall using tank wall connectors.

Conical outlet



Flange outlet



Tank wall connector



Anti-algae covers

High temperatures can accelerate algae growth in the water, especially if residues of fertilizers are still present in the water. To prevent algae growth, we use tension covers (for smaller diameters or when the tanks are inside) and floating covers.

Anti-algae tensioned cover



Anti-algae floating cover



Floating closed cover

If no water is allowed to enter the tank from the outside, a closed cover is a solution. This prevents incoming debris such as leaves, sand or dust from entering the stored water.

Closed floating cover



Closed floating cover, insulated



BUCON size chart

Long panel

H (m)	0,85	1,55	2,35	3,10	3,85	4,60	5,35	6,10
Ø (m)	m³	m³	m³	m³	m³	m³	m³	m³
1,82	2	4	6	8	10	12	14	16
2,73	5	9	14	18	22	27	31	36
3,64	9	16	24	32	40	48	56	64
4,55	13	25	38	50	62	75	87	99
5,46	19	36	54	72	90	107	125	143
6,37	26	49	74	98	122	146	170	195
7,28	34	65	96	128	159	191	223	254
8,19	43	82	122	162	202	242	282	322
9,10	53	101	150	200	249	298	348	397
10,01	65	122	182	241	301	361	421	481
10,92	77	145	216	287	358	430	501	572
11,83	90	170	254	337	421	504	588	671
12,75	105	198	295	392	489	586	683	780
13,66	120	227	338	450	561	672	783	895
14,57	137	258	385	511	638	765	891	1.018
15,48	154	291	434	577	720	863	1.006	1.149
16,39	173	327	487	647	807	968	1.128	
17,30	193	364	542	721	900	1.078	1.257	
18,21	214	403	601	799	997	1.194	1.392	
19,12	235	444	662	881	1.099	1.317		
20,03	258	488	727	966	1.206	1.445		
20,94	282	533	795	1.056	1.318	1.579		
21,85	307	580	865	1.150	1.435			
22,76	334	630	939	1.248	1.557			
23,67	361	681	1.015	1.350	1.684			
24,58	389	734	1.095	1.455	1.816			
25,49	418	790	1.177	1.565	1.953			
26,40	449	847	1.263	1.679				
27,31	480	907	1.352	1.796				
28,22	513	968	1.443	1.918				
29,13	546	1.031	1.538	2.044				
30,04	581	1.097	1.635	2.174				
30,95	617	1.164	1.736	2.307				

Short panel

H (m)	0,85	1,55	2,35	3,10	3,85	4,60	5,35	6,10
Ø (m)	m³	m³	m³	m³	m³	m³	m³	m³
1,34	1	2	3	4	6	7	8	9
2,02	3	5	7	10	12	15	17	20
2,69	5	9	13	18	22	26	30	35
3,36	7	14	21	27	34	41	48	54
4,03	11	20	30	39	49	59	68	78
4,71	14	27	40	53	67	80	93	106
5,38	19	35	53	70	87	104	122	139
6,05	24	45	66	88	110	132	154	176
6,72	29	55	82	109	136	163	190	217
7,39	35	67	99	132	165	197	230	262
8,07	42	79	118	157	196	235	273	312
8,74	49	93	139	184	230	275	321	367
9,41	57	108	161	214	266	319	372	425
10,08	66	124	184	245	306	367	427	488
10,76	75	141	210	279	348	417	486	555
11,43	84	159	237	315	393	471	549	627
12,10	94	178	266	353	440	528	615	703
12,77	105	198	296	393	491	588	685	783
13,45	117	220	328	436	544	652	759	867
14,12	128	242	361	480	599	718	837	956
14,79	141	266	397	527	658	788	919	1.049
15,46	154	291	434	576	719	862	1.004	1.147
16,13	168	317	472	627	783	938	1.094	1.249
16,81	182	344	512	681	849	1.018	1.187	
17,48	197	372	554	736	919	1.101	1.283	
18,15	212	401	597	794	991	1.187	1.384	
18,82	228	431	642	854	1.065	1.277		
19,50	245	462	689	916	1.143	1.370		
20,17	262	495	737	980	1.223	1.466		
20,84	280	528	787	1.047	1.306	1.565		
21,51	298	563	839	1.115	1.392	1.668		
22,18	317	599	892	1.186	1.480			
22,86	337	635	947	1.259	1.571			
23,53	357	673	1.004	1.334	1.665			
24,20	377	712	1.062	1.412	1.761			
24,87	399	752	1.122	1.491	1.860			
25,55	420	794	1.183	1.573	1.962			
26,22	443	836	1.246	1.657	2.067			
26,89	466	879	1.311	1.743				
27,56	489	924	1.377	1.831				
28,24	514	970	1.445	1.921				
28,91	538	1.016	1.515	2.014				
29,58	564	1.064	1.586	2.109				
30,25	590	1.113	1.659	2.205				
30,92	616	1.163	1.734	2.305				



saving water

BUCON industries B.V.

Leeuwenhoekweg 58
2661 DD Bergschenhoek
The Netherlands

sales@bucon-industries.nl
www.bucon-industries.nl